

The Future of the

TTM & dnsmon

Services

Daniel Karrenberg

Chief Scientist
RIPE NCC

[<daniel.karrenberg@ripe.net>](mailto:daniel.karrenberg@ripe.net)



“I didn't have any
knowledge about that
service.”

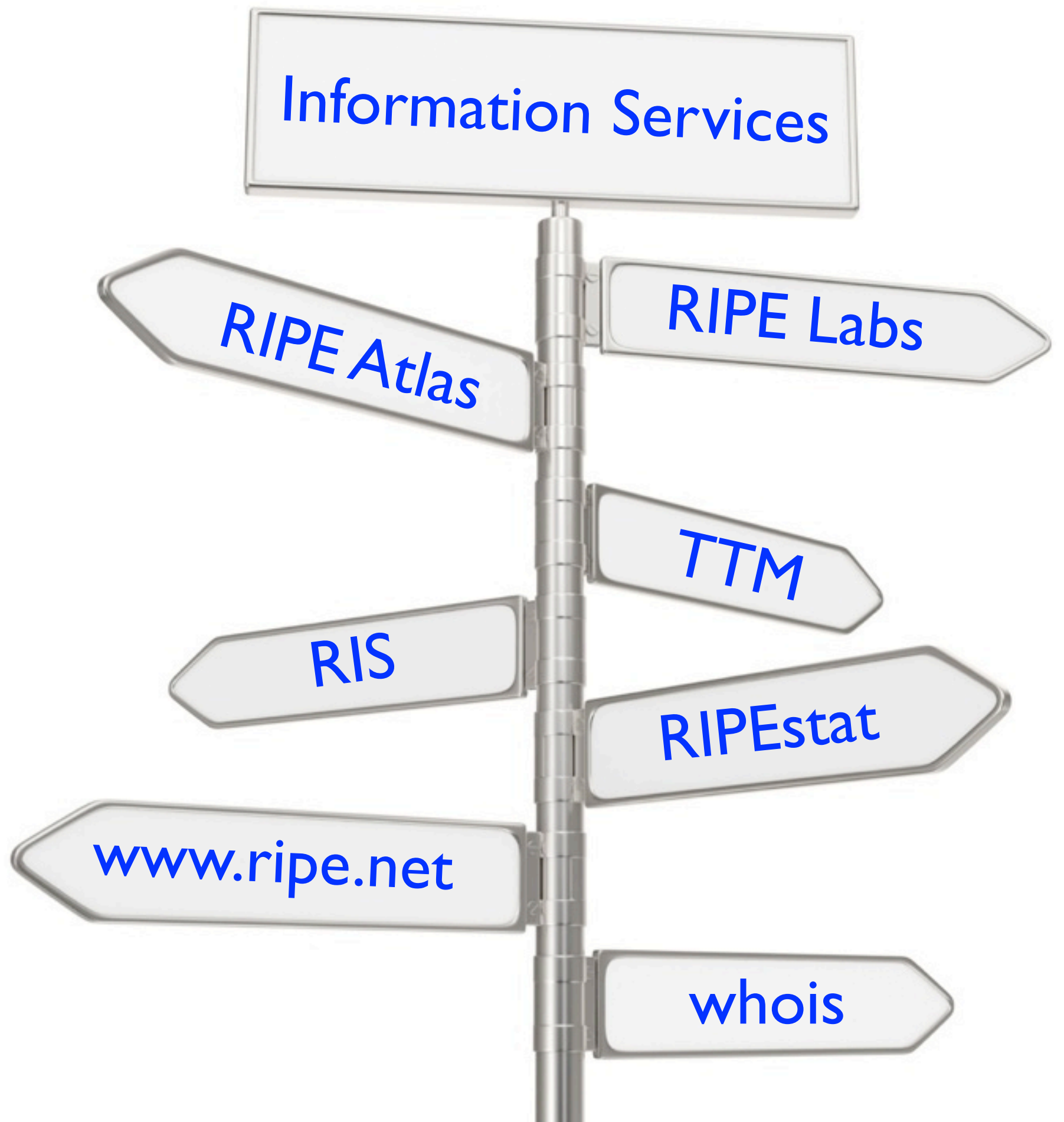
Not useful for my day-to-day work.

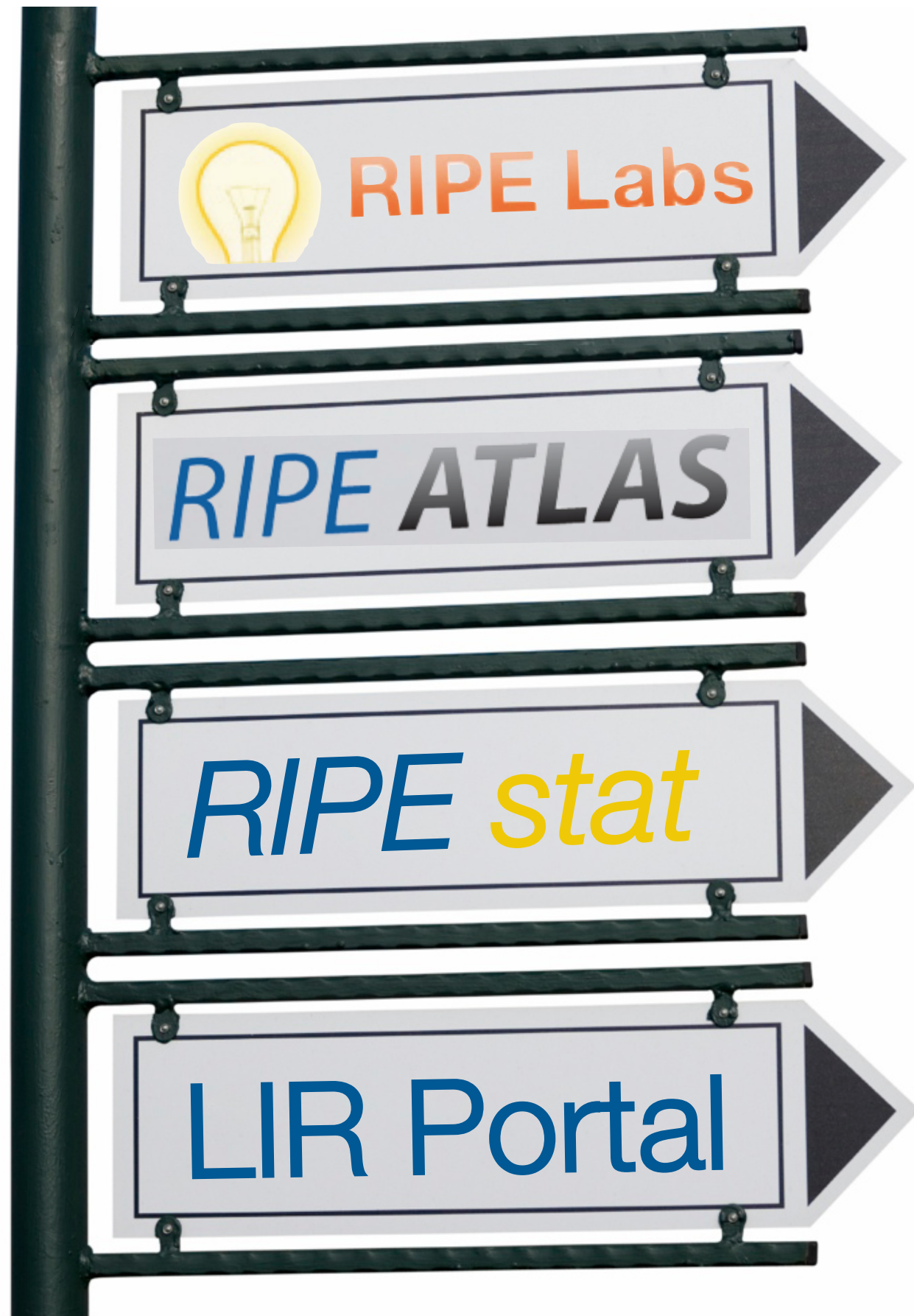
Not easy to use.

More statistics please !

Not easy to find.







Clearly
defined,
intuitive
service
'brands' /
names



RIPE Labs

RIPE *stat*

RIPE *ATLAS*



RIPE Labs

Stories

General Statistics

RIPEstat

RIPE ATLAS



RIPE Labs

Stories

General Statistics

RIPEstat

Specific (IP/ASN)

Real-Time / History

RIPE ATLAS



RIPE Labs

Stories
General Statistics

RIPEstat

Specific (IP/ASN)
Real-Time / History

RIPE ATLAS

State of the Net
Big Picture &
Individual Measurements



RIPE Labs

RIPEstat

RIPE ATLAS

Membership

-

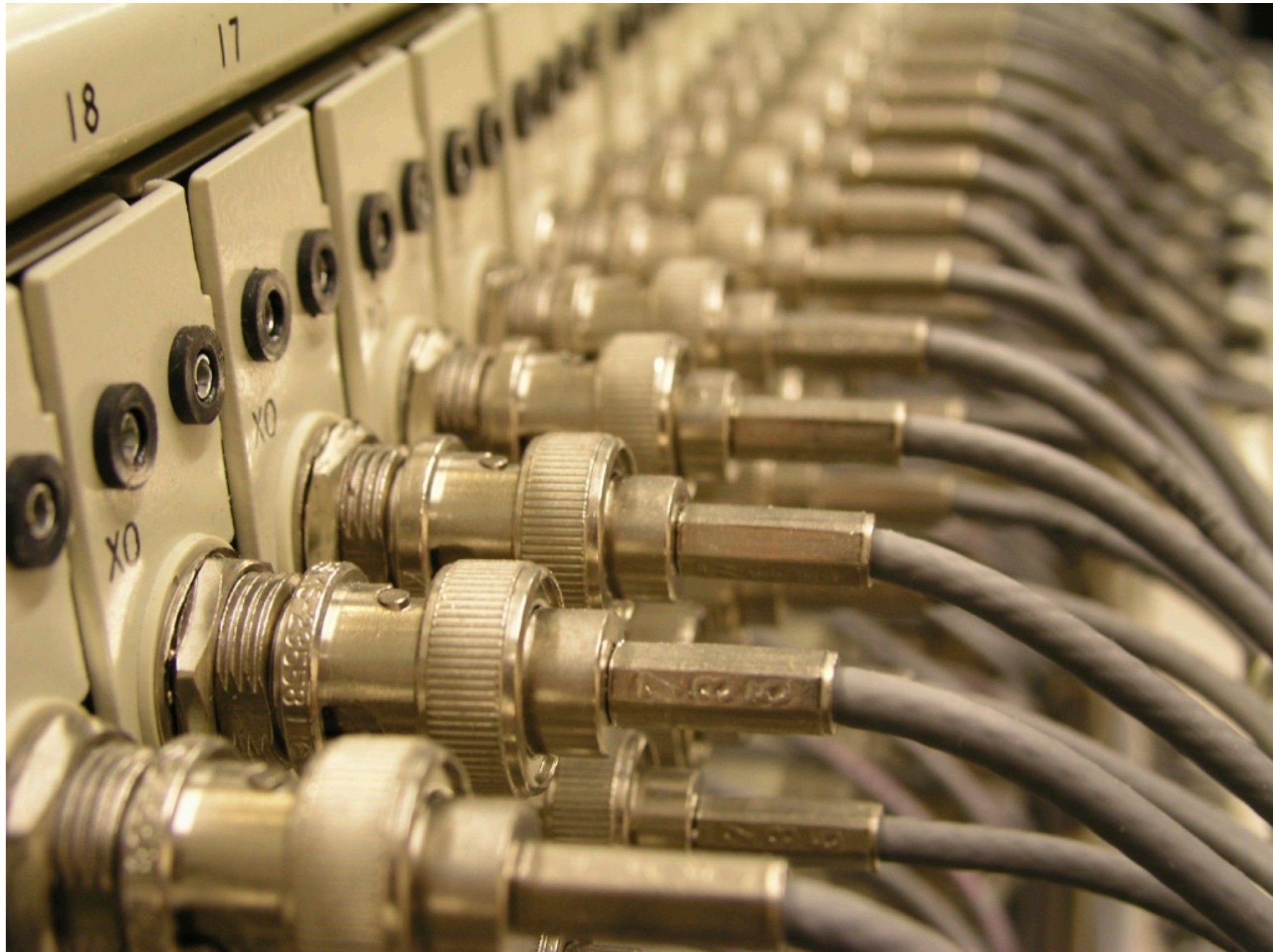
Only

Content

Everywhere

But what about TTM?

- TTM was built for this era:



But what about TTM?

- But we are here:



But what about TTM?

- Deployed Equipment is aging ...



But what about TTM ?

- TTM users want:
 - time service
 - general interest
 - NOC compatible measurements
- We evaluated the options
 - Continuing TTM as-is would require almost total re-deployment
 - Alternative: shut down TTM and satisfy user requirements by more light-weight RIPE Atlas anchors

Evolve TTM

- RIPE NCC decided to shut down TTM by end of Q3/2012
 - enable TTM hosts to continue time service
 - enable TTM hosts to continue local measurements
 - best effort help / hardware supply
- Develop RIPE Atlas Anchors
- Reactions from TTM hosts are positive
- Further work in MAT WG

Then what about dnsmon ????

- dnsmon measurements done by TTM boxes
- dnsmon still very much used



Then what about dnsmon ?????

- Good news: RIPE Atlas can do the same measurements today
 - 1000s of Atlas probes better than 10s of TTM boxes
 - but Atlas probes are not TTM boxes
 - generic alarm service would be good
 - generic presentation/visualisation would be good
- Work to be done in MAT WG

More Details / Feedback

MAT Working Group: Thursday 16:00

Questions?

